

Activity Type

Speaking Activity: asking and answering questions, controlled and freer practice

Focus

Time expressions

Yes/no questions and short answers

Aim

To conduct a class survey where you ask and answer questions that use past, present and future time expressions.

Preparation

Make one copy of the cards for every 12 students and cut as indicated.

Level

Pre-intermediate (A2)

Time

20 minutes

Introduction

In this time expressions activity, students conduct a class survey where they ask and answer questions that use past, present and future time expressions.

Procedure

Give one card to each student. If you have more than 12 students, duplicate some cards.

Tell the students that they are going to practice various time expressions by conducting a class survey.

Have each student prepare the yes/no question they need to ask to find out the information on their card, e.g. 'Did you check your email this morning?'

When the students have finished, check the questions together as a class.

Students then go around the class asking and answering the questions.

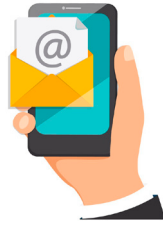
The students keep a record of who answers 'yes' or 'no' on the back of the card.

When the students have spoken to everyone in the class, they tally up the yes answers and write the number on the card.

Each student then reports back their findings to the class. For example, a student with Card A might say, "Ten people in the class checked their email this morning."

Card A

..... people in the class checked their email this morning.



Card B

..... people in the class are going to have dinner at a restaurant tomorrow.



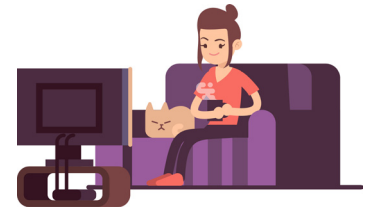
Card C

..... people in the class took a nap yesterday.



Card D

..... people in the class are going to watch TV this evening.



Card E

..... people in the class think they will get home by five o'clock today.



Card F

..... people in the class usually get up early these days.



Card G

..... people in the class use social media every day.



Card H

..... people in the class start work or school at nine o'clock in the morning.



Card I

..... people in the class usually go shopping at the weekend.



Card J

..... people in the class went to bed very late one day last week.



Card K

..... people in the class have coffee with their breakfast every morning.



Card L

..... people in the class are going to play a sport in the near future.

